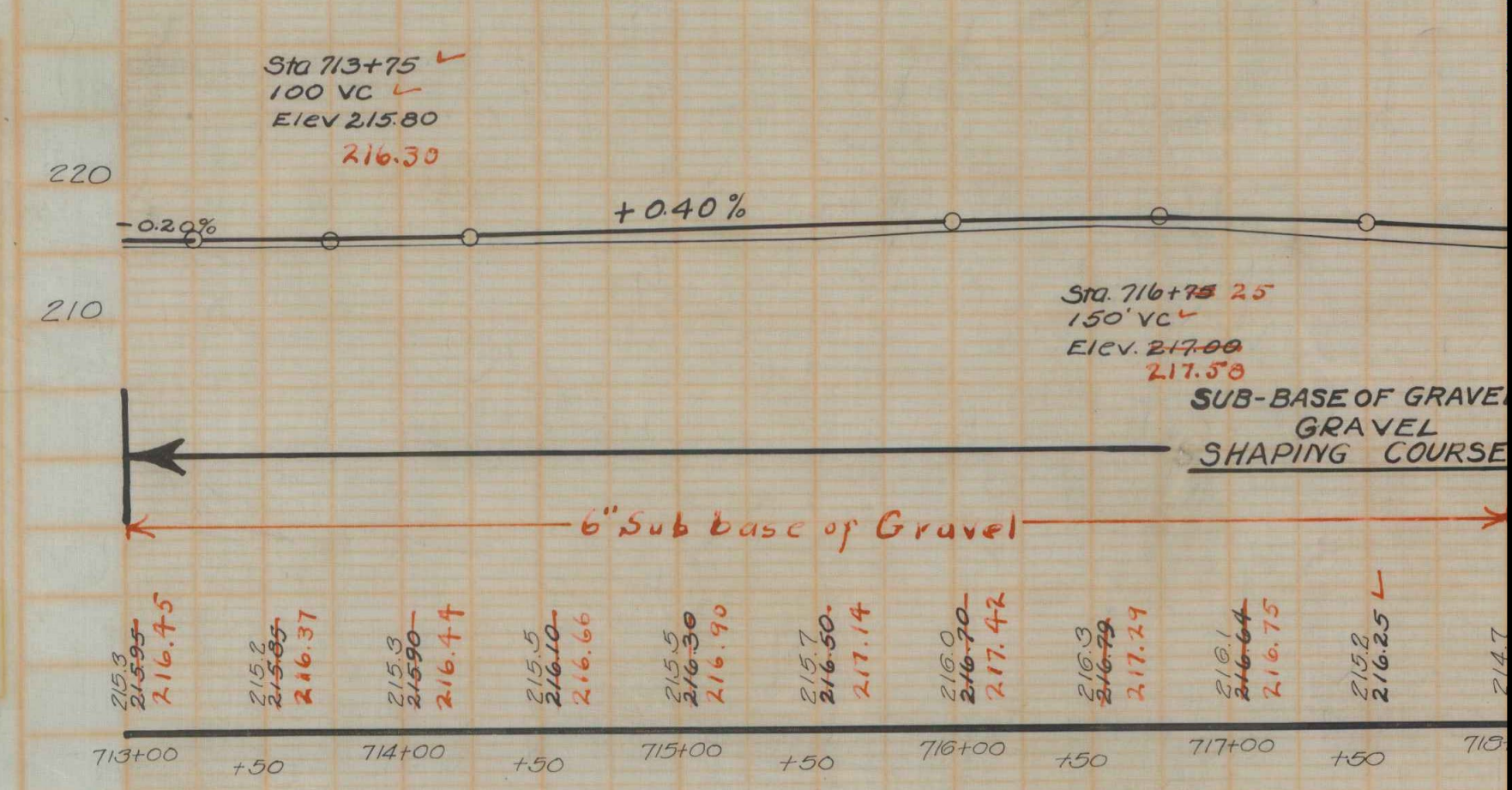
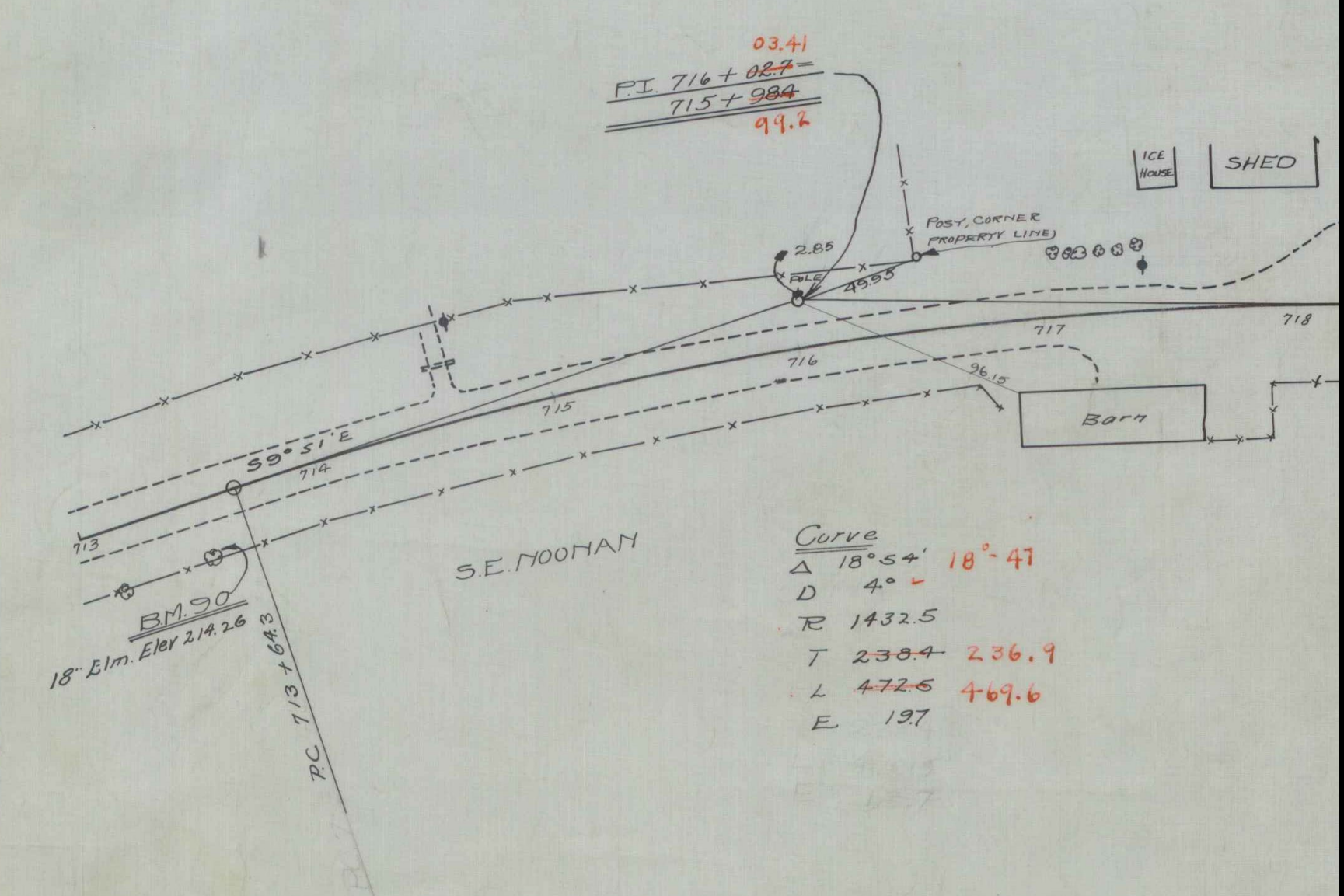


WOOD GUARD RAIL REQUIRED

Sta.	Left	Length	Notes
720+00 to 720+12	Left	12 ft	2" x 4"
722+18 to 722+42	Left	24 ft	2" x 4"
719+00 to 720+12	Right	12 ft	2" x 4"
722+18 to 722+42	Right	24 ft	2" x 4"

NEW CULVERTS REQUIRED

Sta. 720+00	24" Reinf. Concrete Pipe
	Concrete Class A (1'-2" Reinforcing Steel)
Sta. 722+00	30" Reinf. Concrete Pipe
	Concrete Class A (1'-2" Reinforcing Steel)



B.M. No. 90 Spike in 18" Elm. Right of 713+75 Elev. 214.26
 B.M. No. 91 Spike in 24" Elm. Left of Sta. 722+30, Elev. 210.43